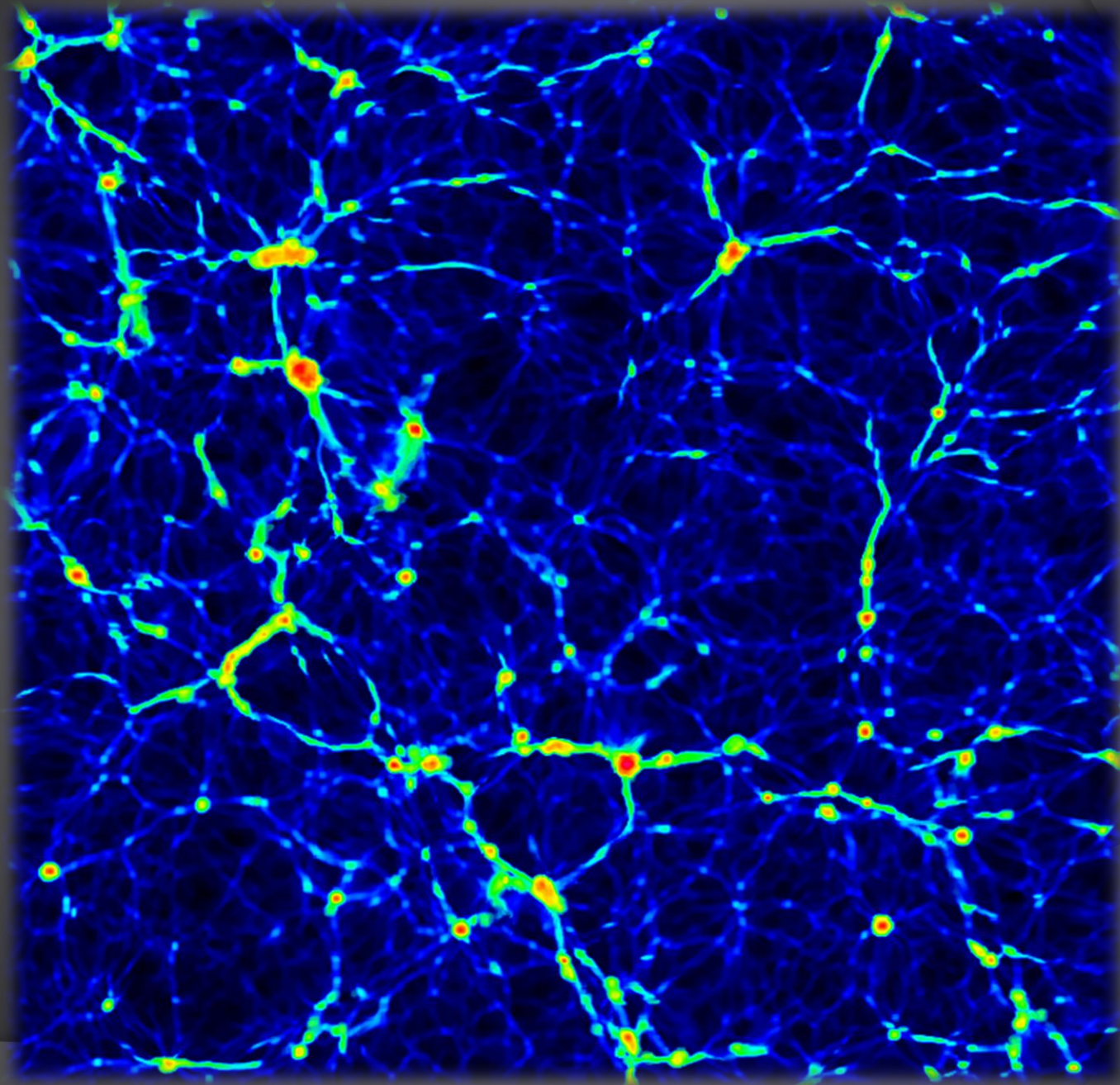


*large-scale
simulations
of
large-scale
structures*

Paul Matthew Sutter
Paul M. Ricker

CScADS Workshop
Snowbird, Utah
July 26, 2010





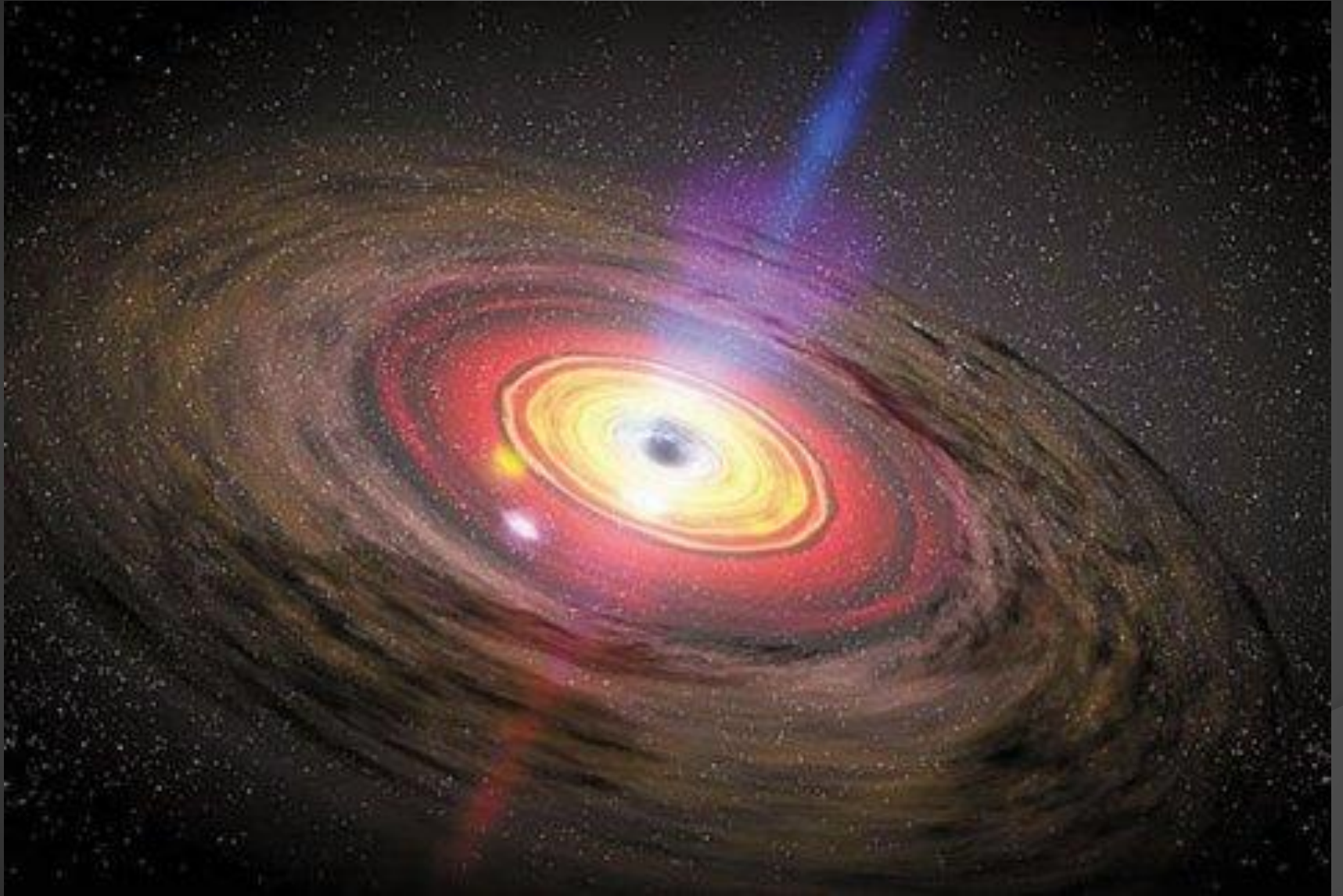


THE BULLET CLUSTER

X-ray: NASA/CXC/M. Markevitch et al.
Optical: NASA/STScI/Magellan (Univ. of Arizona)/D. Clowe et al.

Astronomy
magazine®

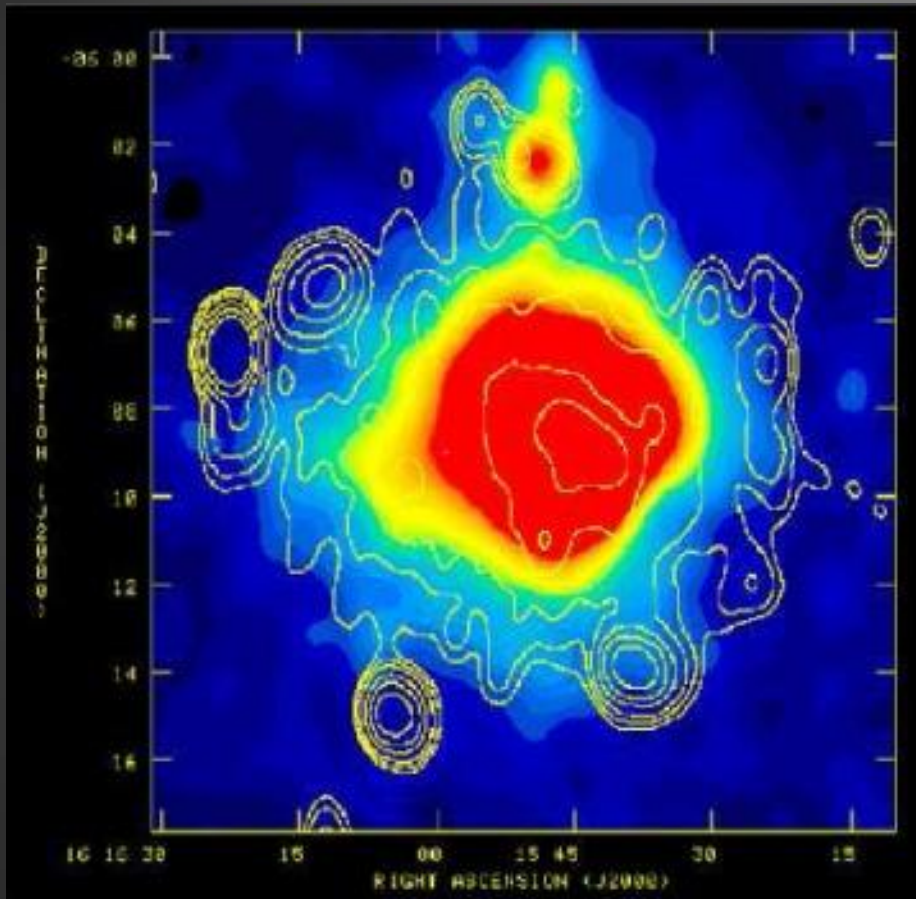
a challenge: feedback



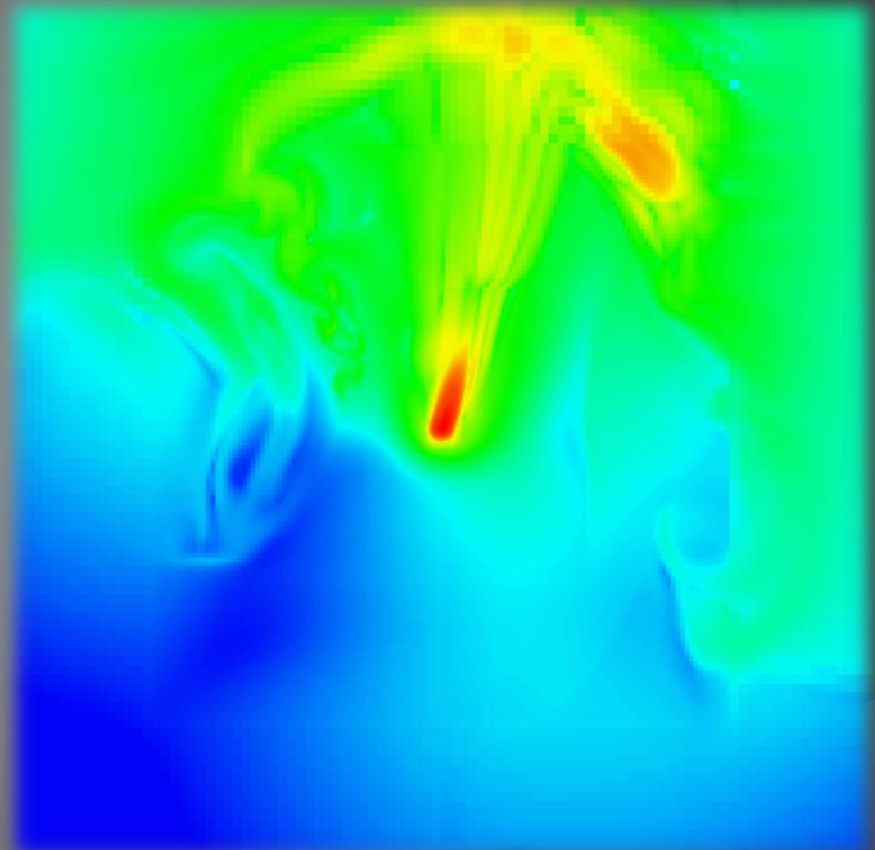
(NASA / Dana Berry)

Abell 2163

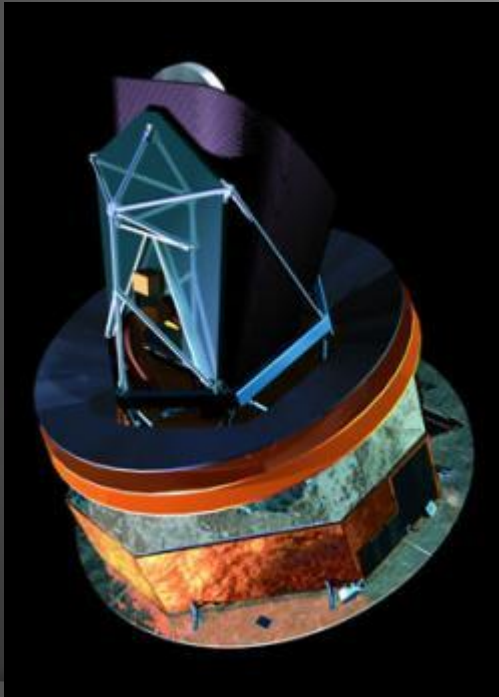
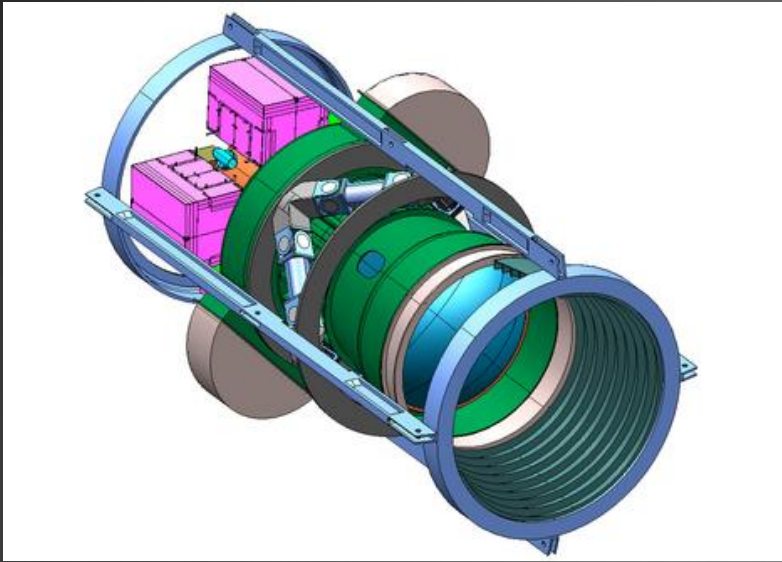
*1.4Ghz Radio Contours (GMRT, India)
and ROSAT X-ray emission*



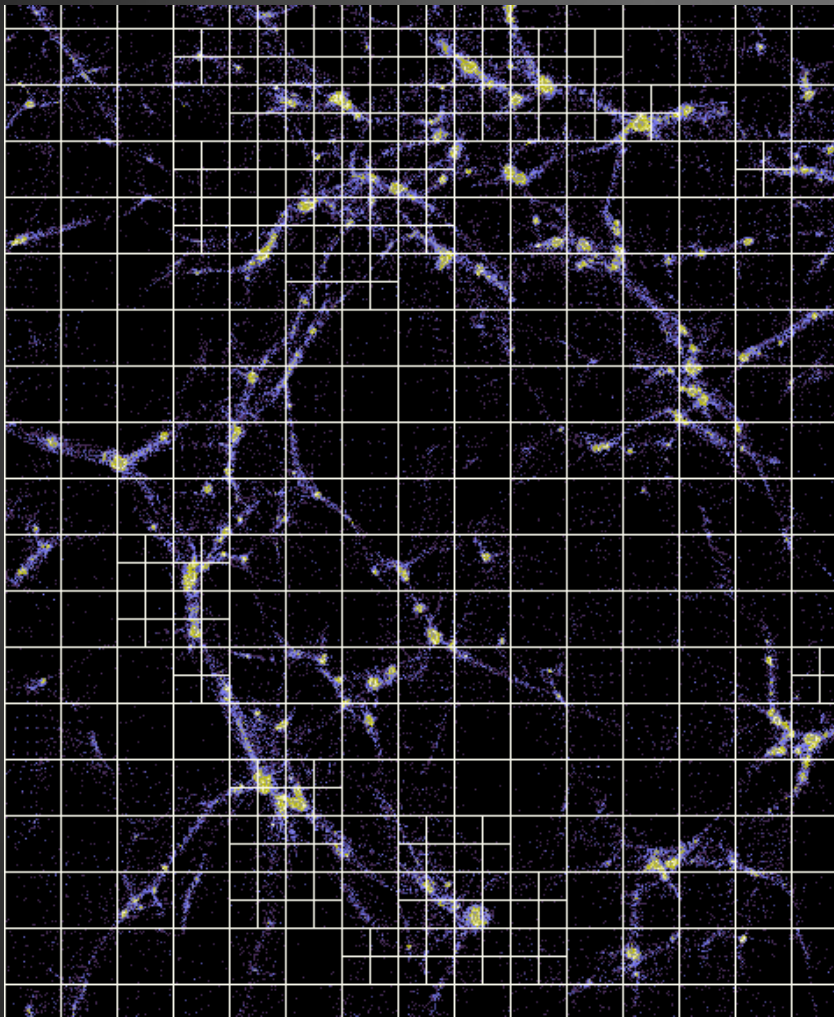
(Feretti et al. 2001)



a challenge: matching observations

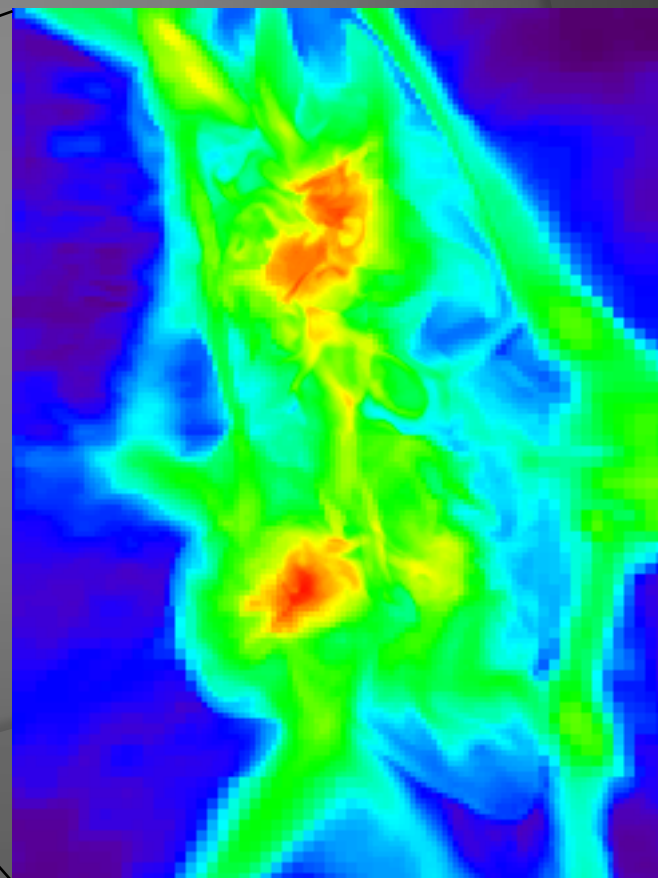
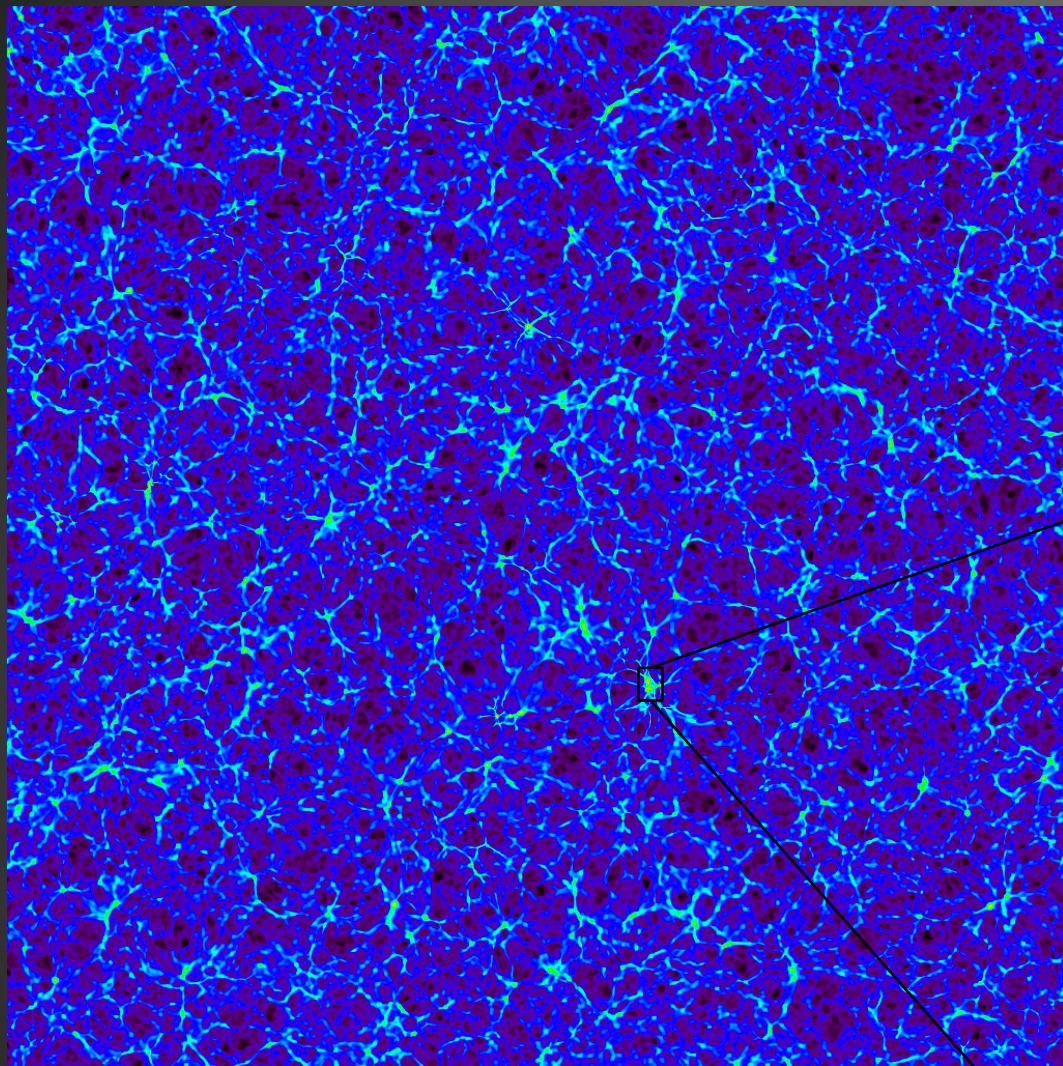


(Fryxell et al. 2000)



- oct-tree adaptive mesh refinement
- gravity: N -body particle-mesh multigrid/PFFT
- hydro: PPM
- MHD: staggered mesh
- sutherland & dopita cooling function
- on-the-fly halo finding
- subgrid models
- scales well to $>100,000$ processors

a first look



- ◎ correlate multiple data sets
 - grid: gas data
 - particles: dark matter
 - objects: black holes
 - derived data: halos
- ◎ describe vector information
 - gas velocity
 - magnetic fields
- ◎ on-the-fly visualization